



PAINT MELBOURNE

Do It Once, Do It Right

(03) 9017-2581

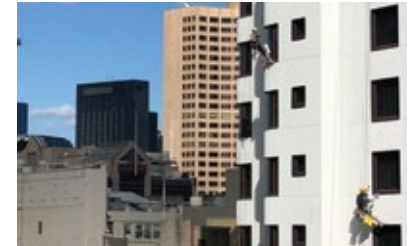


Contents



04 Commercial Painting

Professional quality & minimum disruption



06 High Access

Experienced, trained & insured for working at heights



08 Restoration

The art of returning a building to its original condition



10 Maintenance

The lack of maintenance is the cause of major surprises

12 Heritage

Historic building restoration is no small undertaking

14 Protective Coats

Protection against chemical and physical degradation

Commercial Painting

Maximum Quality & Minimum Disruption



Professional Painting

We follow strict procedures to deliver professional services. Our projects are scoped to achieve maximum longevity of products in accordance with manufacturer standards and product warranty requirements.



It is all about your property

Our commercial services are suitable for small and large projects. Ranging from repainting small units/shops, to the complete restoration of apartment blocks, multi-level homes & high-rise buildings.

Our painters are professionally trained in the safety and mechanical aspects of all elevated work platforms & rope access techniques. We offer specialized defects assessment, rendering, and solid plastering services.

High Access

Elaborate and Innovative Solutions



Elevated areas & difficult to access? Have you tried all other methods?

Paint Melbourne has qualified painting crews who are trained and accustomed to exterior painting on high-rise structures and elevated areas.

Not everyone is equipped to work an entire shift several hundred meters off the ground, but Paint Melbourne has identified a need within our city and accommodated it.



Restoration

From small repairs to complete restoration



Great Combination

Paint Melbourne is much more than a painting company. We have the knowledge, experience and team members to provide complete interior/exterior building restoration services.

Our team is trained to conduct a complete assessment of the building structures to identify problems and risks before and during the project.



New Again

Our process aims to achieve a high level of authenticity, replicating materials and techniques as closely as possible.

Over time, paintwork & renderings can degrade due to air pollution, acid rain and UV radiation. Paint analysis of old paint layers can determine the original pigmentation and enable correct reproduction.

Often, modern substitutes have to be used, as some paints were originally manufactured using harmful materials like lead.



Maintenance

The lack of ongoing maintenance can often be the cause of major building issues



Keep it fresh

Large buildings require the right manpower for ongoing property maintenance on tasks such as rendering, plastering and painting.

Facilities managers know how it can cost less to perform ongoing building maintenance, especially for plaster repairs. As you know, is it hard to absorb those costs all at once.

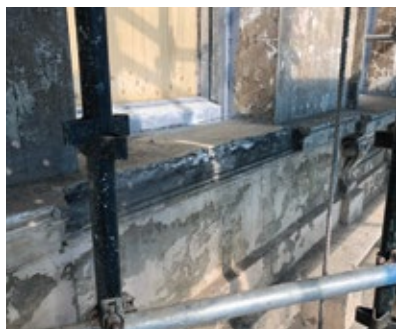
Our in-house team is trained to deliver maintenance works with the highest standards.

We work closely with product manufacturers to select the best solutions and methods to achieve maximum longevity for every project.



Heritage

Historic building restoration is no small undertaking



Historic Preservation

Heritage buildings require special care as they are often full of surprises, which can unexpectedly add up quickly.

The restoration work of a historic building requires accurate work to recreate its form, features and character, while protecting its heritage value.

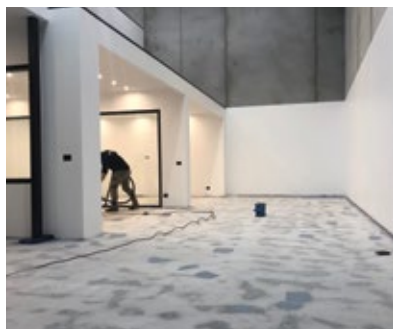
The decay or alterations made to buildings along the years can be reversed as part of our services.

It is extremely beneficial to have a team of experienced professionals to provide assistance, who also understand the ultimate goal of the restoration project.



Protective Coatings

Protection against mechanical, chemical & environmental degradation



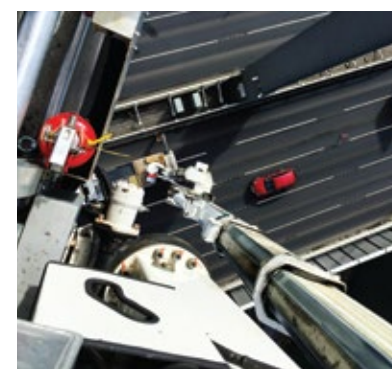
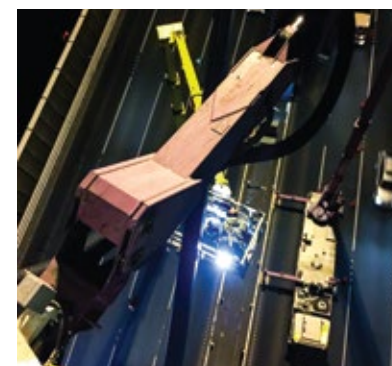
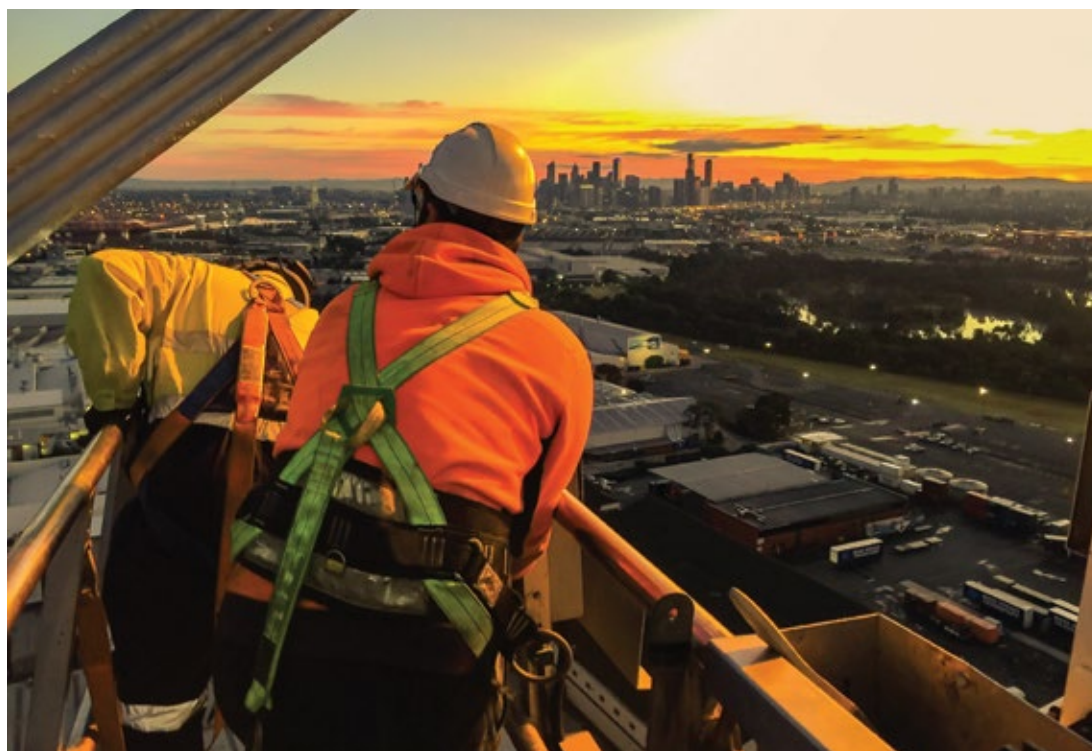
Industrial Solutions

Selecting the most appropriate industrial coatings for each application is key to a long-lasting paint job.

Industrial coats protect the substrate against chemical, physical and environmental attacks. In addition, leaving a pleasing appearance that adds value to your property.

Be aware, there is always a very good reason why one type of coating is better for a project than another.

Contact Paint Melbourne for specialised maintenance and restoration services.



2/56 WIRRAWAY DRIVE
PORT MELBOURNE, VIC 3207

PAINTMELBOURNE.COM
INFO@PAINTMELBOURNE.COM
03 9017 2581

